

indoor

Trio

Round coffee table / centro redondo

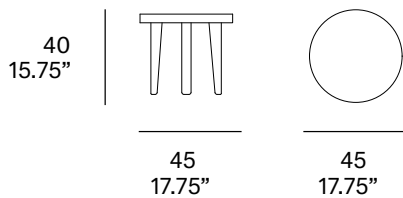
Studio expormim, 2012

T538 45



Tabletop made of solid wood from European oaks with 1.65" of section. Legs made of solid wood profile from European oaks. The collection is also available in a lacquered version (MDF) and in European oak veneer. Protective caps with removable plastic-felt inserts.

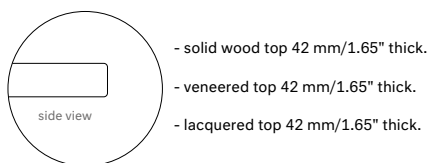
Tapa fabricada en madera maciza de roble europeo de 42 mm de sección. Patas fabricadas en perfilera maciza de roble europeo. La colección está también disponible en versión lacada (MDF) y en tablero chapado de roble europeo. Tacos protectores reversibles de plástico-fielto.



Shipment details

Qty	1 coffee table (1 box)
Volume	0,12 m ³ / 4.2 ft ³
Gross weight	10 kg / 22 lb
Net weight	8 kg / 17.6 lb
Item dimensions (width x depth x height)	45x 45 x 40 cm 17.75" x 17.75" x 15.75"

Tabletop options:



expormim

Expormim S.A.
Pol. Ind. Jaime I
46640 Moixent (Valencia) Spain
+34 962 295 144/5
export@expormim.com
www.expormim.com

Expormim USA LLC
(212) 204-8572
usa@expormim.com
www.expormim.com

1/4

indoor

Solid wood top / tapa madera maciza



W01 natural oak



W03 light oak



W02 white stained



W04 black stained

Veneered top / tapa tablero chapado



W01 natural oak



W03 light oak



W02 white stained



W04 black stained



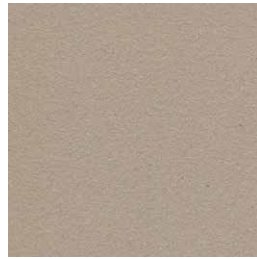
indoor

Lacquered top / tapa lacada

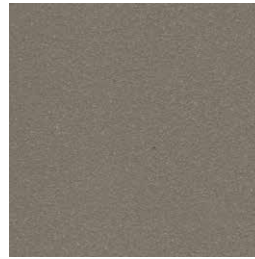
textured lacquers



LT02 light grey



LT09 champagne



LT10 bronze



LT11 graphite

lacquers



L17 forest green



L16 navy blue



L14 japanese red



L5 taupe

indoor

Solid wood legs / patas madera



W01 natural oak



W03 light oak



W02 white stained



W04 black stained



indoor

Trio

Round coffee table / centro redondo

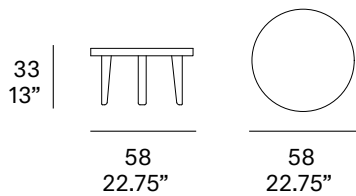
Studio expormim, 2012

T538 58



Tabletop made of solid wood from European oaks with 1.65" of section. Legs made of solid wood profile from European oaks. The collection is also available in a lacquered version (MDF) and in European oak veneer. Protective caps with removable plastic-felt inserts.

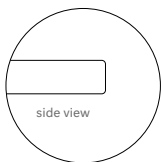
Tapa fabricada en madera maciza de roble europeo de 42 mm de sección. Patas fabricadas en perfilera maciza de roble europeo. La colección está también disponible en versión lacada (MDF) y en tablero chapado de roble europeo. Tacos protectores reversibles de plástico-fielto.



Shipment details

Qty	1 coffee table (1 box)
Volume	0,14 m ³ / 4.9 ft ³
Gross weight	25 kg / 55.1 lb
Net weight	22 kg / 48.5 lb
Item dimensions (width x depth x height)	58 x 58 x 33 cm 22.75" x 22.75" x 13"

Tabletop options:



- solid wood top 42 mm/1.65" thick.
- veneered top 42 mm/1.65" thick.
- lacquered top 42 mm/1.65" thick.

expormim

Expormim S.A.
Pol. Ind. Jaime I
46640 Moixent (Valencia) Spain
+34 962 295 144/5
export@expormim.com
www.expormim.com

Expormim USA LLC
(212) 204-8572
usa@expormim.com
www.expormim.com

1/4

indoor

Solid wood top / tapa madera maciza



W01 natural oak



W03 light oak



W02 white stained



W04 black stained

Veneered top / tapa tablero chapado



W01 natural oak



W03 light oak



W02 white stained



W04 black stained



indoor

Lacquered top / tapa lacada

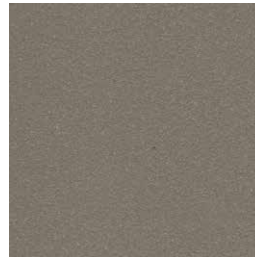
textured lacquers



LT02 light grey



LT09 champagne



LT10 bronze



LT11 graphite

lacquers



L17 forest green



L16 navy blue



L14 japanese red



L5 taupe

indoor

Solid wood legs / patas madera



W01 natural oak



W03 light oak



W02 white stained



W04 black stained



indoor

Trio

Round coffee table / centro redondo

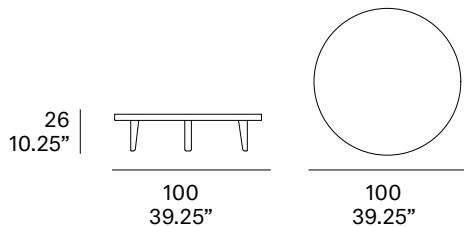
Studio expormim, 2012

T538 100



Tabletop made of solid wood from European oaks with 1.65" of section. Legs made of solid wood profile from European oaks. The collection is also available in a lacquered version (MDF) and in European oak veneer. Protective caps with removable plastic-felt inserts.

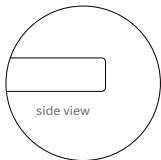
Tapa fabricada en madera maciza de roble europeo de 42 mm de sección. Patas fabricadas en perfilera maciza de roble europeo. La colección está también disponible en versión lacada (MDF) y en tablero chapado de roble europeo. Tacos protectores reversibles de plástico-fielto.



Shipment details

Qty	1 coffee table (1 box)
Volume	0,32 m ³ / 11.3 ft ³
Gross weight	40 kg / 88.2 lb
Net weight	36 kg / 79.4 lb
Item dimensions (width x depth x height)	100 x 100 x 26 cm 39.25" x 39.25" x 10.25"

Tabletop options:



- solid wood top 42 mm/1.65" thick.
- veneered top 42 mm/1.65" thick.
- lacquered top 42 mm/1.65" thick.

expormim

Expormim S.A.
Pol. Ind. Jaime I
46640 Moixent (Valencia) Spain
+34 962 295 144/5
export@expormim.com
www.expormim.com

Expormim USA LLC
(212) 204-8572
usa@expormim.com
www.expormim.com

1/4

indoor

Solid wood top / tapa madera maciza



W01 natural oak



W03 light oak



W02 white stained



W04 black stained

Veneered top / tapa tablero chapado



W01 natural oak



W03 light oak



W02 white stained



W04 black stained



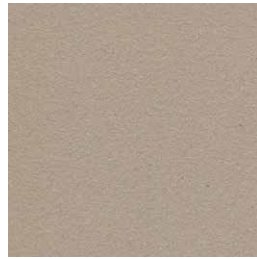
indoor

Lacquered top / tapa lacada

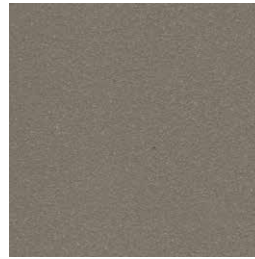
textured lacquers



LT02 light grey



LT09 champagne



LT10 bronze



LT11 graphite

lacquers



L17 forest green



L16 navy blue



L14 japanese red



L5 taupe

indoor

Solid wood legs / patas madera



W01 natural oak



W03 light oak



W02 white stained



W04 black stained

